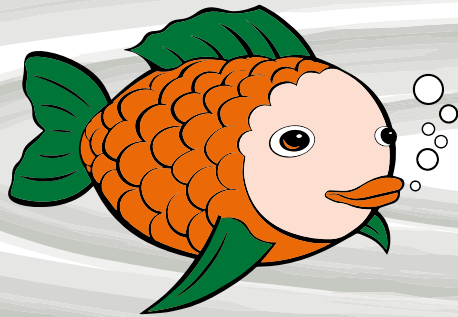
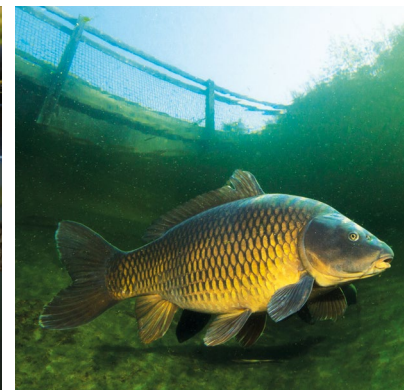
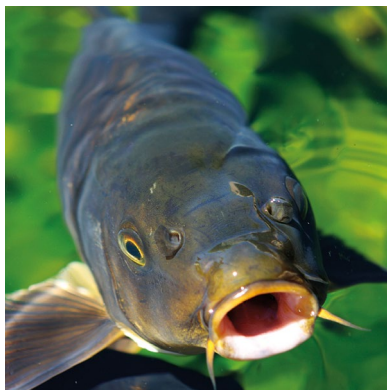


Fishing lures

Fishing bait



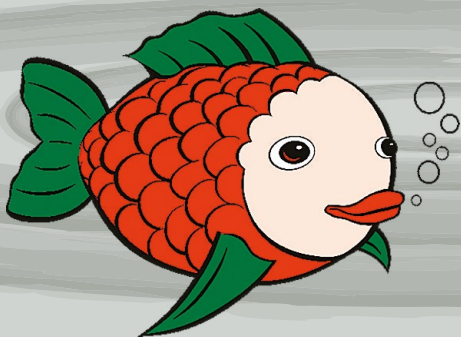
Big-fish



successful feeding

www.likra.com

LIKRA
Tierernährung



Big-fish



Big-fish Prime Products

Page 1	F41030070	Royal Match 3 mm
Page 1	F41000057	Fishing Bait < 0,8 mm
Page 2	F41200056	Huge Carp bait 20 mm
Page 2	F41140055	Carp-Donut 14 mm
Page 3	F4200000	Feeder basic feed < 2 mm
Page 3	F8020018	Lure Cube 16 mm



Big-fish Carp feed

Page 5	85952000	TK 859-2 2,5 mm
Page 5	4150005	TK 860 4 mm
Page 5	4181005	TK 861 4 mm
Page 5	4160005	TK 862 4 mm

only in big bag



Big-fish Method Feed pellets

Page 4	F41015048	Micros 1,5 mm
--------	-----------	---------------



Big-fish Method Fishing rod pellets

Page 6	F41080052	Red Halibut 8 mm
Page 6	F42000067	Insect-Bait 4 x 12 mm



Big-fish Color Blend

Page 6	F41000038	Attract RED
Page 6	F41000046	Attract YELLOW
Page 6	F41000047	Attract GREEN



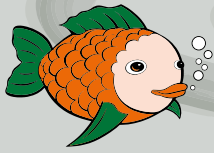
Big-fish Flavor Mixture

Page 7	F41000042	Gingerbread
Page 7	F41000043	Strawberry
Page 7	F41000044	Cyprico Special
Page 7	F41000040	Mild cheese



Big-fish Method Feed Mixtures

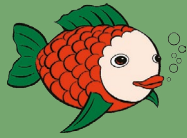
Page 7	F41000054	Premium Feeder Mix < 0,5 mm
--------	-----------	-----------------------------



Big-fish Prime Products

F41030070

Ø 3 mm



Big-fish Royal Match



Royal Match is the further development of the tried and tested **Premium Match**. Constant research made it possible to further strengthen the positive properties of the predecessor product.

These include the **extraordinary attractiveness**, the **good water absorption capacity** (on 1 liter of feed max. 0,25 l of water) and above all the **excellent acceptance** by the fish.

A slight reduction in the protein content of the **Royal Match** ensures excellent absorption even in times of excess protein (zooplankton bloom).

Contents:
1,5 kg

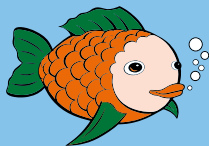
LIKRA
Tierernährung

Best before
see sticker

LIKRA Tierernährung GmbH
Ignaz-Mayer-Straße 12 • 4021 Linz
Telefon: 0732/ 77 64 47-0 • Fax: DW 10
e-Mail: info@likra.com • www.likra.com

F41000057

Ø < 0,8 mm



Big-fish Fishing Bait

Handling



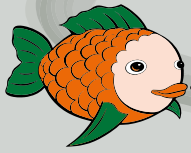
- ▶ best attraction through more fish meal
- ▶ contains new, bite-reinforced flavored materials
- ▶ also catches in overfished bodies of water
- ▶ also very suitable for mixing

Contents:
3 kg

LIKRA
Tierernährung

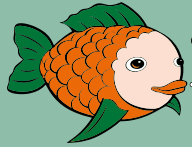
Best before
see sticker

LIKRA Tierernährung GmbH
Ignaz-Mayer-Straße 12, 4021 Linz
Telefon: 0732/ 77 64 47-0, Fax: DW 10
E-Mail: info@likra.com, www.likra.com



Big-fish Prime Products

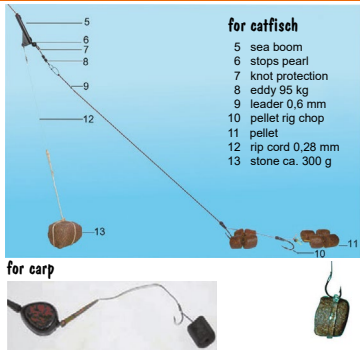
F41200056



Big-fish Huger Carp bait

Ø 20 mm

Handling



Excellent for the targeted fishing for **big carp and catfish**. Contains the most attractive raw materials in terms of taste, Quality based on **halibut feed** and is very easy to digest.

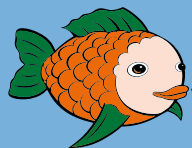
Contents: **3 kg**

LIKRA
Tierernährung

Best before
see sticker

LIKRA Tierernährung GmbH
Ignaz-Mayer-Straße 12 • 4021 Linz
Telefon: 0732/ 77 64 47-0 • Fax: DW 10
e-Mail: info@likra.com • www.likra.com

F41140055



Big-fish Carp-Donut

Ø 14 mm

Handling



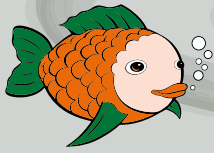
The best alternative to carp - boilies!
Very short time to get used to it.
Particularly **strong attraction** through sprayed attractant. Extremely simple Bait and very easy to digest.

Contents: **3 kg**

LIKRA
Tierernährung

Best before
see sticker

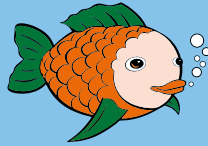
LIKRA Tierernährung GmbH
Ignaz-Mayer-Straße 12 • 4021 Linz
Telefon: 0732/ 77 64 47-0 • Fax: DW 10
e-Mail: info@likra.com • www.likra.com



Big-fish Prime Products

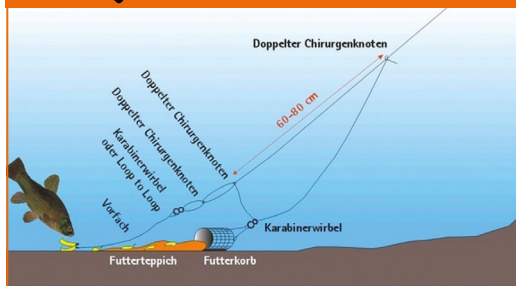
F4200000

Ø < 2 mm



Big-fish Feeder Basic Feed

Handling



Big fish Feeder basic feed is special for fishing with a **feed basket** compiled **aromatized bait**.
A feed consistency originates through the measured addition of water, which only releases her particles in a body of water and very quickly forms a feed carpet around the offered bait.

Contents:
10 kg

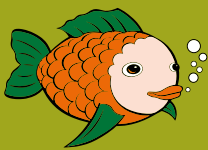
LIKRA
Tierernährung

Best before
see sticker

LIKRA Tierernährung GmbH
Ignaz-Mayer-Straße 12, 4021 Linz
Telefon: 0732/ 77 64 47-0, Fax: DW 10
E-Mail: info@likra.com, www.likra.com

F8020018

Ø 16 mm



Big-fish Lure Cubes



The new **Big Fish Lure Cubes** were specially developed for creating **feeding areas in flowing waters**.

Due to their cuboid shape and **the high weight**, the very stable **16 mm** cubes can be spread out easily with feed shovels or spinners and remain well on the bottom of the feeding area, **even in strong currents**. From there, they slowly release their **attractants**.

All in all, these properties result in a product that was **previously not available in this form** and that makes **targeted feeding** (especially in running waters) **much easier**.

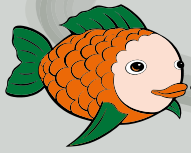


Contents:
10 kg

LIKRA
Tierernährung

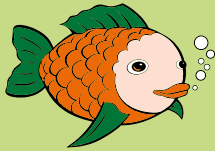
Best before
see sticker

LIKRA Tierernährung GmbH
Ignaz-Mayer-Straße 12 • 4021 Linz
Telefon: 0732/ 77 64 47-0 • Fax: DW 10
E-Mail: info@likra.com • www.likra.com



Bi₉-fish Products

F41015048



Bi₉-fish Micros 1,5



Are equipped with tasty content materials, which beside its **excellent luring effects** for all whitefishes and carps whose animal-appropriate composition (in addition to an immunostimulant), as a side effect provide for the best condition of the fish.

By using these micropellets in the basic feed, the fish are encouraged to **intensively search the bottom** around the bait and thus kept at the fishing spot for much longer.

Usage:

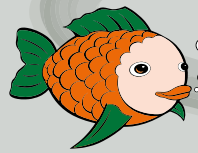
Contents:
1 kg

LIKRA
Tierernährung

Best before
see sticker

LIKRA Tierernährung GmbH
Ignaz-Mayer-Straße 12, 4021 Linz
Telefon: 0732/ 77 64 47-0, Fax: DW 10
E-Mail: info@likra.com, www.likra.com





Big-fish Carp feed



Big-fish

TK 859-2
Carp starter feed OGT
pelleted 2,5 mm

only
in big bag

Art.Nr.: 85952000

Ingredients:

Crude protein	35,00 %
Crude fat	5,60 %
Crude fiber	5,30 %
Crude ash	10,70 %
Phosphorus	1,00 %

Additives per kg:

Vitamin A	50.000,0	I.E.
Vitamin D3	3.000,0	I.E.
Vitamin E	250,0	mg
Copper	5,0	mg
Iodine	5,0	mg
Selenium	0,6	mg
Iron	150,0	mg
Manganese	140,0	mg
Zinc	130,0	mg

Feeding advice

TK 859-2 is a highly vitaminized complete feed with a pellet size of 2,5 mm, which is used to raise carp between 10 and 25 cm in length.

Fish length (TL in cm) (10 - 25)	
< 10° C	
10 - 12° C	1.0
12 - 14° C	1.5
14 - 16° C	2.0
16 - 18° C	2.6
18 - 20° C	3.1
20 - 22° C	3.6
22 - 24° C	4.1
24 - 26° C	4.6
> 26° C	

Packaging Unit: Big bag 700 kg



Ø 2,5 mm



Big-fish

TK 860
Carp breeding feed OGT
pelleted 4 mm

Complete feed for carp

Art.Nr.: 4150005

Ingredients:

Crude protein	30,50 %
Crude fat	1,40 %
Crude fiber	5,30 %
Crude ash	7,90 %
Calcium	1,00 %
Phosphorus	0,90 %
Sodium	0,25 %

Additives per kg:

Vitamin A	25.000,0	I.E.
Vitamin D3	1.500,0	I.E.
Vitamin E	125,0	mg
Copper	2,5	mg
Iodine	2,5	mg
Selenium	0,3	mg
Iron	75,0	mg
Manganese	70,0	mg
Zinc	115,0	mg

Feeding advice

TK 860 Karpfen-Alleinfutter OGT is used in spring after the TK 861 conditioning feed and outside of the zooplankton bloom, in which TK 862 is to be preferred. The feed can be offered on conventional feeding tables (40-80 cm below the water surface) or using automatic feeders.

The amount depends on the water temperature, the size of the fish and the natural food available; it fluctuates between 1 and 3% of the live weight. Sufficient oxygen content in the water is essential for good feed evaluation.

Packaging Unit: 25 kg



Ø 4 mm



Big-fish

TK 861
Carp conditioning feed
pelleted 4 mm

Complete feed for carp

Art.Nr.: 4181005

Ingredients:

Crude protein	33,00 %
Crude fat	5,50 %
Crude fiber	4,30 %
Crude ash	10,70 %
Phosphorus	1,00 %
Sodium	0,20 %

Additives per kg:

Vitamin A	50.000,0	I.E.
Vitamin D3	3.000,0	I.E.
Vitamin E	250,0	mg
Copper	5,0	mg
Iodine	5,0	mg
Selenium	0,6	mg
Iron	150,0	mg
Manganese	140,0	mg
Zinc	130,0	mg

Feeding advice

As soon as the carp start to feed after the winter rest, TK 861 guarantees that the fish are adequately supplied with energy and vitamins.

After about 4 weeks you can switch to a standard food such as TK 860 if necessary.

In autumn, fed from approx. 4 weeks before the winter rest, TK 861 improves the condition of the carp significantly and thus guarantees trouble-free wintering.

Packaging Unit: 25 kg



Ø 4 mm



Big-fish

TK 862
Carp energy feed OGT
pelleted 4 mm

Complete feed for carp

Art.Nr.: 4160005

Ingredients:

Crude protein	20,50 %
Crude fat	2,60 %
Crude fiber	5,00 %
Crude ash	7,00 %
Phosphorus	0,80 %
Sodium	0,25 %

Additives per kg:

Vitamin A	25.000,0	I.E.
Vitamin D3	1.500,0	I.E.
Vitamin E	125,0	mg
Copper	2,5	mg
Iodine	2,5	mg
Selenium	0,3	mg
Iron	75,0	mg
Manganese	70,0	mg
Zinc	115,0	mg

Feeding advice

The zooplankton bloom takes place twice a year in natural waters and ensures a particularly high supply of natural food.

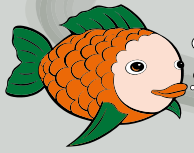
During this period, TK 862 reduces the ammonia excretion through the gills of the fish and thus extends the plankton bloom time.

Furthermore, this carp energy feed improves the utilization of the plankton protein and therefore has a positive effect on the management of the water.

Packaging Unit: 25 kg



Ø 4 mm



Bi_g-fish Method Fishing pellets / feed pellets

F41080052

Bi_g-fish Bait Pellets

Ø 8 mm

Red Halibut 8 mm

Nutritionally suitable composed feed pellets are extremely attractive for sweet water fishes through high-quality content materials. Fixed in suitable pellet rubber, this top achieving product as Method Feeder bait as well as for the fishing rod, the best catch success.

Big fish Red Premium Halibut 8 mm Pellets can be mixed in tiny amounts to the bait to increase bite rate.

Contents: 150 g

LIKRA
Tierernährung

Best before see sticker
LIKRA Tierernährung GmbH
Ignaz-Mayer-Strasse 12, 4021 Linz
Telefon: 0732/ 77 64 47-0, Fax: DW 10
E-Mail: info@likra.com, www.likra.com

F42000067

Bi_g-fish Insect-Bait

4 x 12 mm

Method Insect based bait

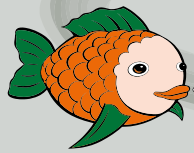
Insect Bait is a new type of buoyant **high-protein** food made from **insect meal** and other high-quality raw materials, which is ideal for use as **Method bait (in a rubber band)** due to its shape and taste. In combination with natural maggots, Insect Bait acts as a particularly **attractive float**.

Fished from the pole, this caster-like bait has to be offered slightly weighted.

Contents: 100 g

LIKRA
Tierernährung

Best before see sticker
LIKRA Tierernährung GmbH
Ignaz-Mayer-Strasse 12, 4021 Linz
Telefon: 0732/ 77 64 47-0, Fax: DW 10
E-Mail: info@likra.com, www.likra.com



Bi_g-fish Color Blend

F41000038

Bi_g-fish attract RED

Color Blend

Consist of new, food-real colorings with the addition of appetite stimulant mixtures, which decisively contribute to the attraction of the feed.

Feed color intensity can be controlled by the amount added.

Bait attraction can be increased according to the body of water coordinated with color additives.

attract RED

Contents: 150 g

LIKRA
Tierernährung

Best before see sticker
LIKRA Tierernährung GmbH
Ignaz-Mayer-Strasse 12, 4021 Linz
Telefon: 0732/ 77 64 47-0, Fax: DW 10
E-Mail: info@likra.com, www.likra.com

F41000046

Bi_g-fish attract YELLOW

Color Blend

Consist of new, food-real colorings with the addition of appetite stimulant mixtures, which decisively contribute to the attraction of the feed.

Feed color intensity can be controlled by the amount added.

Bait attraction can be increased according to the body of water coordinated with color additives.

attract YELLOW

Contents: 150 g

LIKRA
Tierernährung

Best before see sticker
LIKRA Tierernährung GmbH
Ignaz-Mayer-Strasse 12, 4021 Linz
Telefon: 0732/ 77 64 47-0, Fax: DW 10
E-Mail: info@likra.com, www.likra.com

F41000047

Bi_g-fish attract GREEN

Color Blend

Consist of new, food-real colorings with the addition of appetite stimulant mixtures, which decisively contribute to the attraction of the feed.

Feed color intensity can be controlled by the amount added.

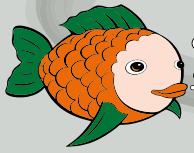
Bait attraction can be increased according to the body of water coordinated with color additives.

attract GREEN

Contents: 150 g

LIKRA
Tierernährung

Best before see sticker
LIKRA Tierernährung GmbH
Ignaz-Mayer-Strasse 12, 4021 Linz
Telefon: 0732/ 77 64 47-0, Fax: DW 10
E-Mail: info@likra.com, www.likra.com



Big-fish Flavor Mixture

F41000042



Big-fish Taste

Flavor Mixture

Consist of new, food-real colorings with the addition of appetite stimulant mixtures, which decisively contribute to the attraction of the feed.

Feed taste intensity can be controlled by the amount added.



- Flavor:
Gringerbread
- Target fish:
Carps/Blue nose/
Bream/White bream

Contents:
150 g

Best before
see sticker

LIKRA Tierernährung GmbH
Ignaz-Mayer-Straße 12, 4021 Linz
Telefon: 0732/ 77 64 47-0, Fax: DW 10
E-Mail: info@likra.com, www.likra.com

LIKRA
Tierernährung

F41000043



Big-fish Taste

Flavor Mixture

Consist of new, food-real colorings with the addition of appetite stimulant mixtures, which decisively contribute to the attraction of the feed.

Feed taste intensity can be controlled by the amount added.



- Flavor:
Strawberry
- Target fish:
Carps/White fish

Contents:
150 g

Best before
see sticker

LIKRA Tierernährung GmbH
Ignaz-Mayer-Straße 12, 4021 Linz
Telefon: 0732/ 77 64 47-0, Fax: DW 10
E-Mail: info@likra.com, www.likra.com

LIKRA
Tierernährung

F41000044



Big-fish Taste

Flavor Mixture

Consist of new, food-real colorings with the addition of appetite stimulant mixtures, which decisively contribute to the attraction of the feed.

Feed taste intensity can be controlled by the amount added.



- Flavor:
Mild cheese
- Target fish:
Carp/Barbel/Sturgeon

Contents:
150 g

Best before
see sticker

LIKRA Tierernährung GmbH
Ignaz-Mayer-Straße 12, 4021 Linz
Telefon: 0732/ 77 64 47-0, Fax: DW 10
E-Mail: info@likra.com, www.likra.com

LIKRA
Tierernährung

F41000040



Big-fish Taste

Flavor Mixture

Consist of new, food-real colorings with the addition of appetite stimulant mixtures, which decisively contribute to the attraction of the feed.

Feed taste intensity can be controlled by the amount added.



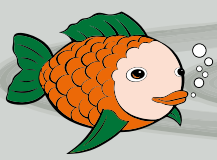
- Flavor:
Cyprico Special
- Target fish:
Carps / Bream

Contents:
150 g

Best before
see sticker

LIKRA Tierernährung GmbH
Ignaz-Mayer-Straße 12, 4021 Linz
Telefon: 0732/ 77 64 47-0, Fax: DW 10
E-Mail: info@likra.com, www.likra.com

LIKRA
Tierernährung



Bi9-fish Feeder Match Waver



Ø 6 mm

F4308007

This bait hovers over the ground, but the hook remains on the ground. However, this effect can vary depending on the size and type of hook!

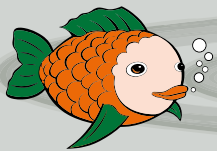
It is advisable to test it beforehand in shallow water or in a glass!

In the color directions:

- PINK
- YELLOW
- BLUE



Packaging unit: 30 g can



Bi9-fish Hook Baits Sinker



Ø 6 mm

F4108007

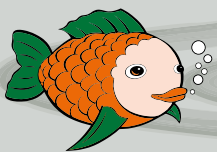
These hookbaits are usually used for match, feeder or waggler fishing.

In the color directions:

- PINK
- YELLOW
- BLUE



Packaging unit: 50 g can



Bi9-fish Monster



Ø 12 mm

F41120077

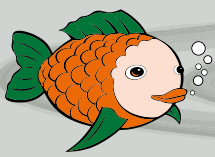
This boilie is a fish meal mix that has been enriched with various vegetable and animal extracts. We have paid particular attention to using only fine flours so that the boilie almost always survives piercing with a bait needle or spike without breaking. Especially for feeder and match fishing.

In the color directions:

- ORANGE



Packaging unit: 300 g can



Big-fish Pop up Wonderfruit



Ø 12 mm

F43120078

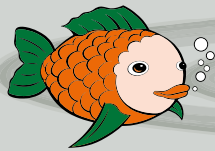
Pop-up in bright colors exerts a visual stimulus on the curious carp, which tempts them to bite. Regardless of whether it is a single pop-up on the Multirig or as a snowman, in combination with a boilie, this visual stimulus brings bites very often and quickly.

In addition to this visual stimulus, our pop-up also contains extracts that give the mix itself a strong attraction. In the mix, a special plasma ensures that the water-soluble proteins are transported to the outside. After a very short time, the pop-up is covered with a highly attractive slime that sends out protein signals. The result is a much faster reaction!

In the color direction:
- FLUORO-ROSA



Packaging unit: 50 g can



Big-fish Boilie Bag Squid



Ø 20 mm

F41200079

This boilie impresses with a perfect price / performance ratio, solid ingredients and a beautiful structure - everything a good boilie needs! In addition to fish meal and various plant-based ingredients, rearing feed is a large part of this mix.

This feed brings important attractors into the boilie and makes it a full-fledged bait that is quickly and, above all, accepted by the fish in the long term - THE bait for long feed campaigns!



Packaging unit: 1.5 kg bag

LIKRA Tierernährung

The LIKRA parent company has become the headquarters of the LIKRAGROUP over the past few years. We are constantly expanding our market lead by increasingly pooling resources in innovation and product development.

Our specialists in product development continuously ensure a modern product portfolio under the brands LIKRA, MFM and INNTALER.

Every day we concentrate on the production of high quality animal feed, precisely those products with which we are successful together with our customers on the Austrian and international markets.



THE BEST FOR MY ANIMAL



LIKRA Tierernährung GmbH
Ignaz-Mayer-Straße 12, 4021 Linz
Telefon: 0732 / 77 64 47-0, Fax: DW 10
@: info@likra.com, www.likra.com

Ein Unternehmen der 
LIKRAGROUP
BE PART OF IT

Version 06/2021

